

Labour Market Information



*LMI obtained from the Office for National Statistics and Gov.uk. Last updated January 2020

Greater Manchester LEP

Wigan, Bolton, Bury, Salford, Rochdale, Oldham, Tameside, Manchester & Stockport

Employment



UK - 76.3%
LEP - 76.2%

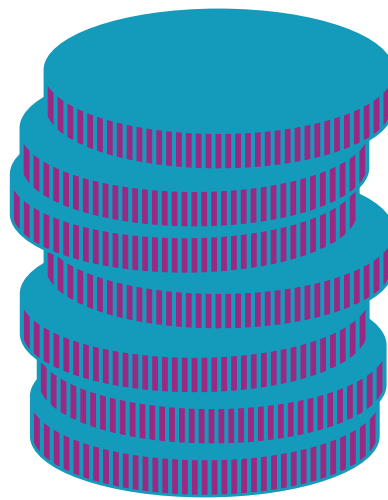
16-64 year old population = 1,790,400

Unemployment



UK - 3.8%
LEP - 4.8%

Salary



UK Average - £30,414
LEP Average - £28,402

Self-Employment



183,000 people in the region are self-employed

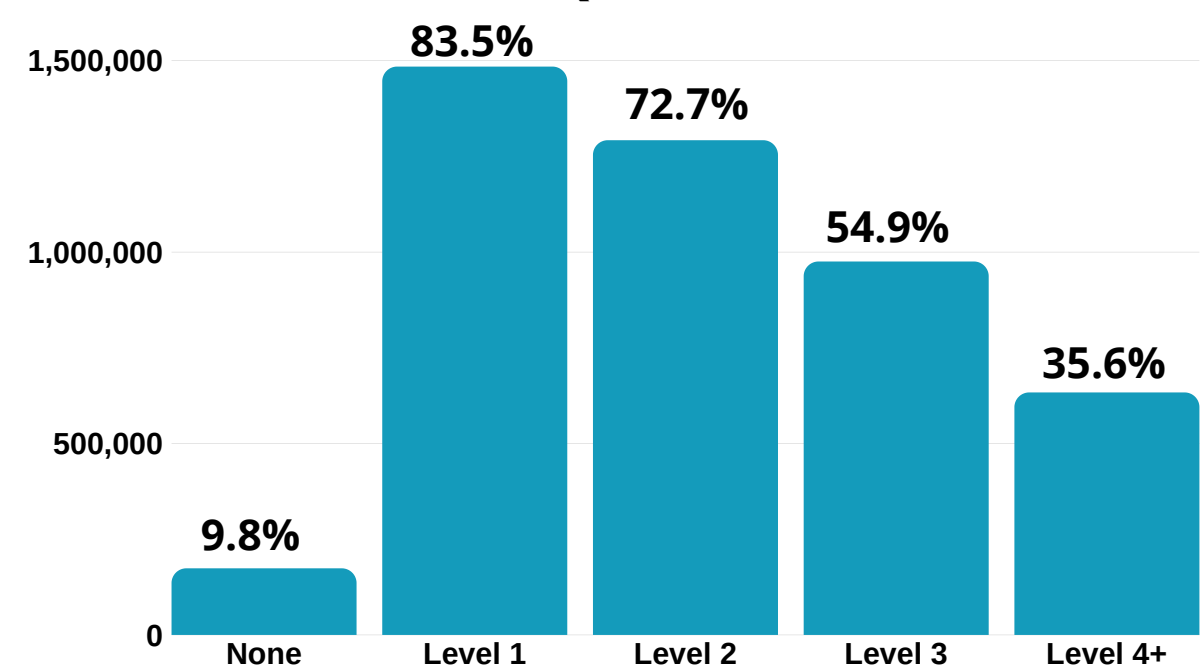
Growth by job sector by 2022

- I.T and Cyber Security
- Health and Social Care
- Support/Customer Services
- Professional Services
- Management and Directors



Qualification levels

1,291,600 people have at least a level 2 qualification such as GCSEs or an NVQ.



Where do people work right now?

Most jobs

- Wholesale & Retail - 224,000 (16.8%)
- Health & Social Care - 159,000 (11.9%)
- Administration - 142,000 (10.7%)
- Science & Technology - 121,000 (9.1%)
- Education - 114,000 (8.6%)

Fewest jobs

- Arts & Entertainment - 29,000 (2.2%)
- Real Estate - 23,000 (1.7%)
- Electricity, Gas & Air - 12,000 (0.9%)
- Water, Sewerage & Waste - 7,000 (0.5%)
- Mining, Quarrying & Utilities - 350 (0.02%)

Did you know...

The NHS is the UK's biggest employer, and the 5th biggest employer in the world!

What are the region's biggest companies to work for?



Need careers advice? Call us on 0800 100 900, contact us online, or find us on Facebook, Twitter and The Student Room.